



# VIDYA BHARATI MAHAVIDYALAYA AMRAVATI

NAAC Re-accredited with Grade "A" (CGPA 3.23-Third Cycle) | CPE Status (Thrice) by UGC

Mentor College under Paramarsh Scheme by UGC

'Lead College' by S.G.B. Amravati University, Amravati.

**4.4.2 There are established system and procedures for maintaining and utilizing physical, academic and support facilities-laboratory, library, sports complex, computers, classrooms, etc.**



# **VIDYA BHARATI MAHAVIDYALAYA AMRAVATI**

NAAC Re-accredited with Grade "A" (CGPA 3.23-Third Cycle) | CPE Status (Thrice) by UGC  
Mentor College under Paramarsh Scheme by UGC  
'Lead College' by S.G.B. Amravati University, Amravati.

<b>Sr. No.</b>	<b>Content</b>
<b>1</b>	<b>Policy and Procedure Document</b>
<b>2</b>	<b>Snapshots: Maintainance</b>

---

VIDYA BHARATI MAHAVIDYA,  
CAMP AMRAVATI

---

Policy and Procedure  
Document

**4.4.2 There are established systems and procedures for maintaining and utilizing physical, academic and support facilities - laboratory, library, sports complex, computers, classrooms etc**

# Policy

The institute's infrastructure is well-suited to create a supportive environment for achieving program outcomes. The campus has been designed with careful consideration of both current and future needs of the institution. Additionally, the laboratories for all core subjects are fully equipped and properly maintained.

At the start of each session, a budget is allocated for the enhancement and upkeep of infrastructure. The Purchase Committee prepares the budget estimates based on evolving requirements and sustainable development goals. These estimates are then submitted to the College Development Committee for approval, followed by submission to the Management Committee for final authorization.

- **Physical facilities**

**a) Academic Facilities:**

The institution provides sufficient resources, including classrooms, laboratories, seminar halls, and an auditorium, to meet the requirements of its programs. Classrooms and laboratories are utilized to their maximum potential by operating in two shifts. 17 classrooms are equipped with LCD projectors for delivering lectures via PowerPoint presentations. Most departments are equipped with ICT facilities and are used for guest lectures and other events. The well-equipped 2 Auditorium, featuring an LCD projector and a sound system, is frequently used for workshops, symposia, and conferences.

**b) Library:**

The library was automated in 1998 and houses a vast collection of textbooks, reference books, magazines, and journals. Additionally, it offers an e-library facility, providing access to e-books, e-journals, Shodhganga, and databases to support research advancements.

**c) Computing and IT Facilities:**

The institution provides adequate and relevant computing and internet services, with most departments equipped with ICT facilities. It operates a 100 Mbps leased-line internet connection and ensures students have access to a sufficient number of computers for their needs.

**d) Digitalized Working System:**

The institute effectively manages its operations using software applications for administration, documentation, reporting, and tracking, ensuring a streamlined and well-governed workflow.

- **Support facilities**

In addition to academic resources, the institution provides essential support facilities to meet the needs of all stakeholders. These include provisions for indoor and outdoor games, a gymnasium, yoga center, health center, entrepreneurship cell, college canteen, boys' and girls' common rooms, and eco-friendly initiatives.

**a) Gymnasium:**

The campus features an in-house gymnasium, aligning with the goal of holistic development for students. Regular physical exercise at the gym helps improve both mood and attitude.

**b) Yoga Center:**

To foster a spiritual and holistic approach among students and staff, the institution has established a yoga center under the guidance of a qualified yoga instructor. This center promotes physical and mental fitness while helping individuals manage stress effectively.

**c) Entrepreneurship Cell:**

The Entrepreneurship Cell aims to inspire students to pursue entrepreneurial aspirations. It regularly organizes activities, workshops, and competitions to develop skills and encourage innovative thinking among students.

**d) College Canteen:**

The college canteen complements the students' educational experience by promoting social interaction and healthy eating habits in a comfortable environment.

**e) Common Rooms:**

The college provides separate common rooms for girls as part of its upgraded infrastructure. These areas are equipped with Wi-Fi, allowing students to engage in discussions or relax.

**f) Girls' Hostel:**

The campus includes hostels for undergraduate and postgraduate girls, with capacities of students, respectively. These hostels provide mess services for healthy and fresh meals, alongside amenities such as a library, recreational hall, water cooler, and solar water heaters.

**g) Eco-Friendly Initiatives:**


The institution actively promotes an eco-friendly campus through several initiatives:

- **Solar Panels:** Installed to conserve electricity, utilizing a sustainable and free energy source.
- **Rainwater Harvesting:** A large water harvesting system increases the campus water table, contributing to water conservation.
- **Compost Pit:** Green waste from the campus gardens is used to produce organic manure, which enhances soil quality.
- **Plantation Drives:** Regularly conducted by NSS, NCC, and various departments, both on campus and in nearby villages, to support environmental conservation.
- **Cleanliness Drives:** Organized at public places such as railway stations, bus stands, vegetable markets, and hospitals to promote hygiene and public health.


# Procedure for Maintenance

The institution has established policies and procedures to ensure a healthy, pleasant, and comfortable environment.


- ✦ **Cleaning Services:** Hired services for cleaning classrooms, toilets, the auditorium, campus areas, and the girls' hostel.
- ✦ **Garden Maintenance:** A dedicated gardener maintains the green spaces and botanical garden, with additional support from Botany department.
- ✦ **Water Supply:** Water is sourced from the municipal corporation and a campus borewell. Water purifiers and coolers are installed at various locations and maintained by experts.
- ✦ **Electric Supply Management:** A separate ventilated electric meter room has been established in an open area to handle extra load, with MCBs installed for safety.
- ✦ **Power Backup:** A generator is available to manage power outages, ensuring uninterrupted operations.
- ✦ **Solar Energy:** Solar panels installed on the roof generate significant amounts of electricity, reducing dependency on the power grid and lowering electricity bills.
- ✦ **Energy Efficiency:** LED lights are installed in most open spaces and classrooms to reduce electricity consumption.
- ✦ **Electrical Maintenance:** Maintenance of electrical units, wiring, and repairs is managed by Industrial Training Institute (ITI).
- ✦ **IT Support:** The maintenance of computers, software, hardware, and internet facilities is entrusted to a qualified person.
- ✦ **Campus Security:** Security guards from a private service ensure the safety of the campus.
- ✦ **CCTV Surveillance:** The entire campus is monitored through CCTV for the safety and security of students and staff.
- ✦ **Fire Safety:** Fire extinguishers are installed to ensure preparedness in case of emergencies.

  
Prof. P. G. BANSOD  
Co-ordinator  
Internal Quality Assurance Cell  
Vidya Bharati Mahavidyalaya  
Camp, Amravati, 431002 (M.S.)



  
Principal  
Principal  
Vidya Bharati Mahavidyalaya  
Amravati.

## Campus Security and CCTV Surveillance



1, Camp Rd, Paranjpe Colony, Amravati, Maharashtra 444603, India

Latitude 20.93560264°	Longitude 77.77470464°
Local 02:20:30 PM GMT 08:50:30 AM	Altitude 12.57 meters Monday, 05.02.2024

Note : VBMV Amravati

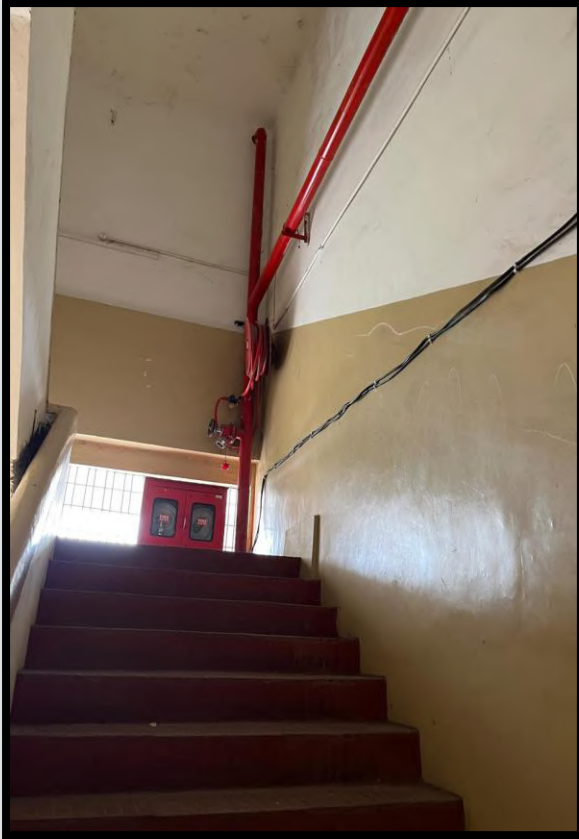


1, Camp Rd, Paranjpe Colony, Amravati, Maharashtra 444603, India

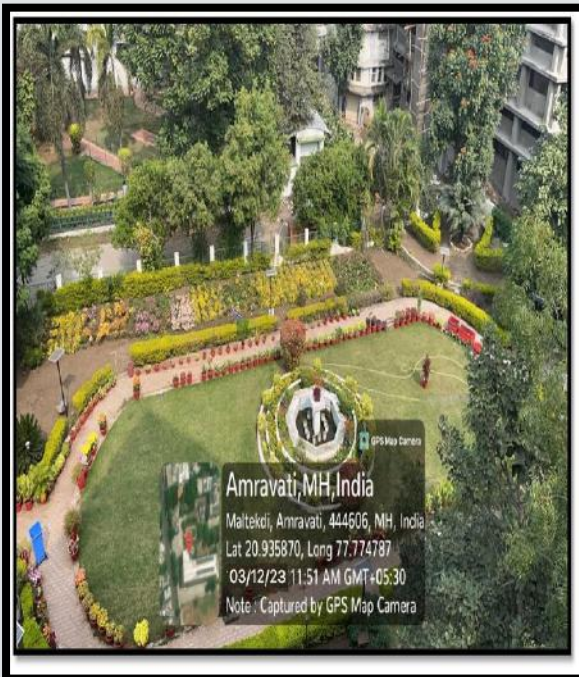
Latitude 20.93542438°	Longitude 77.77454013°
Local 02:12:05 PM GMT 08:42:05 AM	Altitude 12.57 meters Monday, 05.02.2024

Note : VBMV Amravati

## Fire Safety and Electrical Maintenance



## Garden and Playfield Maintenance



Amravati, MH, India  
Maitekdi, Amravati, 444606, MH, India  
Lat 20.935870, Long 77.774787  
03/12/23 11:51 AM GMT+05:30  
Note: Captured by GPS Map Camera



1, Camp Rd, Paranjpe Colony, Amravati, Maharashtra 444603, India

Latitude

20.93530231°

Local 05:08:27 PM

GMT 11:38:27 AM

Longitude

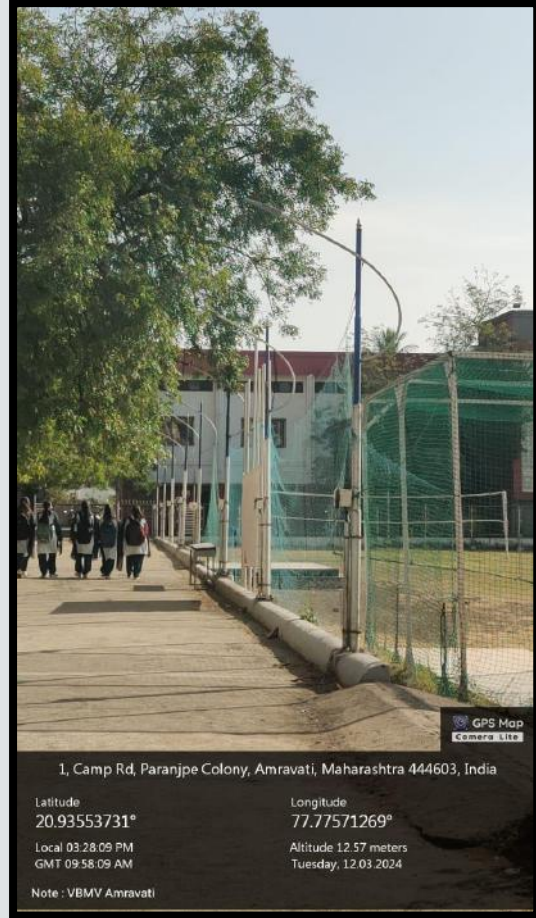
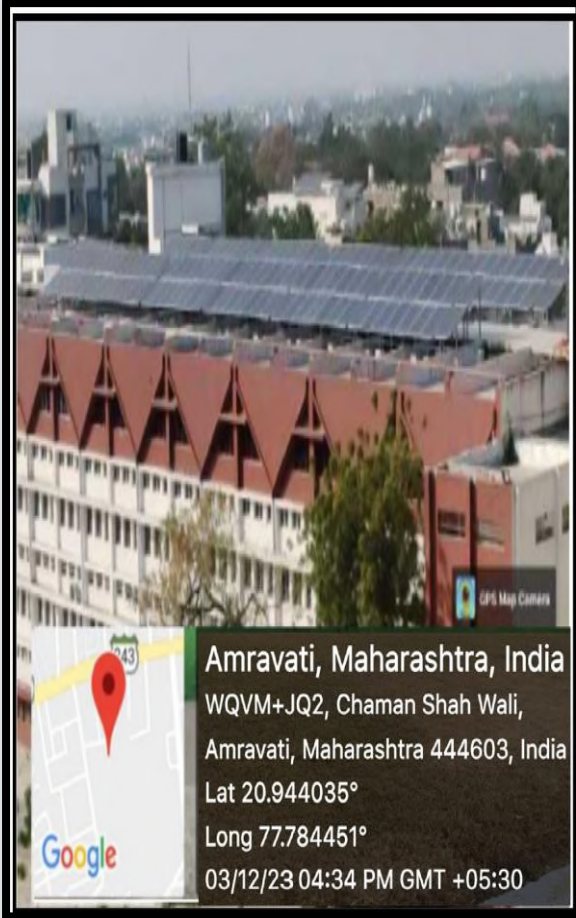
77.77455302°

Altitude 12.57 meters

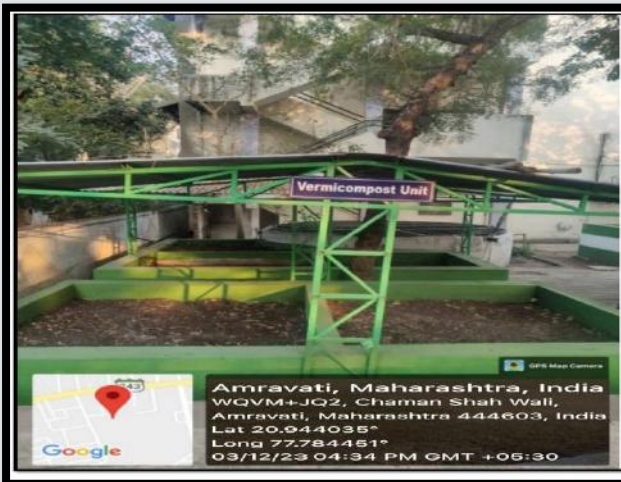
Saturday, 04.02.2024



## Solar Energy



## Vermicompost Unit



*Penbar*  
**Principal**  
**Principal**  
**Vidya Bharati Mahavidyala**  
**Amravati.**

*A. Anand*  
**Prof. P. G. BANSOD**  
 Coordinator  
 Internal Quality Assurance Cell  
 Vidya Bharati Mahavidyala  
 Camp, Amravati-444602 (M.S.)

